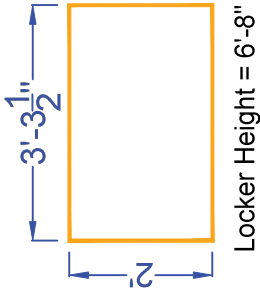




Venterra - Canton Mills Lofts Indoor Towers - Floor Plan



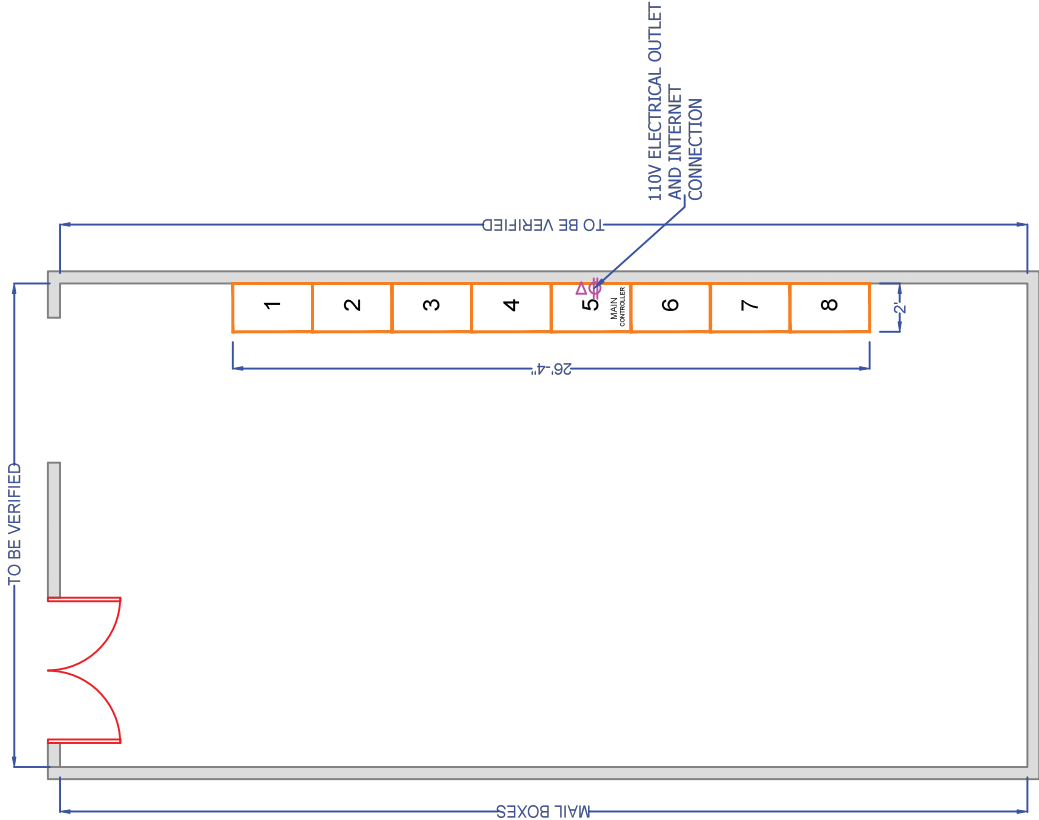
Outlet Information :
Data and Power outlets should be located behind control tower at any height.
*Lockers will be about 2" away from wall.

or

Data and Power outlet should be located above control tower at 81" above finished floor.
*Lockers can sit flush with wall.

SYMBOLS:

- Power Outlet: Standard 110V Electrical Outlet
- Ethernet Outlet: Dedicated RJ45 Data Jack



Disclaimer: Floor plan measurements are approximate and are for illustrative purposes only. While we make our best efforts towards the floor plan accuracy, warranty or representation as to the accuracy and completeness of the floor plan. Customer will be responsible for any construction related expenses to prepare the locker room, and shall ensure that the locker room complies with federal, state, and municipal laws, ordinances and regulations, including but not limited to ADA requirements.